



## CINTAS TRANSPORTADORAS

**emico**  
sociedad anónima

## INTRODUCTION

EMICO S.A Is a company which was set up in 1978, and since then has been dedicated to supplying machines and equipment for mining and underground constructions. Our philosophy, based on innovation and service, allows us to be present in the majority of underground infrastructures which have been carried out over the last few decades in Spain and among our customers are the vast majority of national companies dedicated to the world of infrastructure and underground construction and industry.

Our experience and development has been strengthened in recent years due to offices being set up in the international market in the same field of underground civil works and mining. Establishing ourselves as far a field in countrues including Panama, Costa Rica, Honduras, Venezuela, Peru, Chile and Colombia.

## ENGINEERING

## MANUFACTURING

## MAINTENANCE

**“ OF COURSE WE CAN”**

### Advantages of using betl conveyors

- They optimise logistical needs and transportation of materials over long distances
- They are adaptable to production and ground conditions
- Transports vast quantity of goods.
- Product not altered.

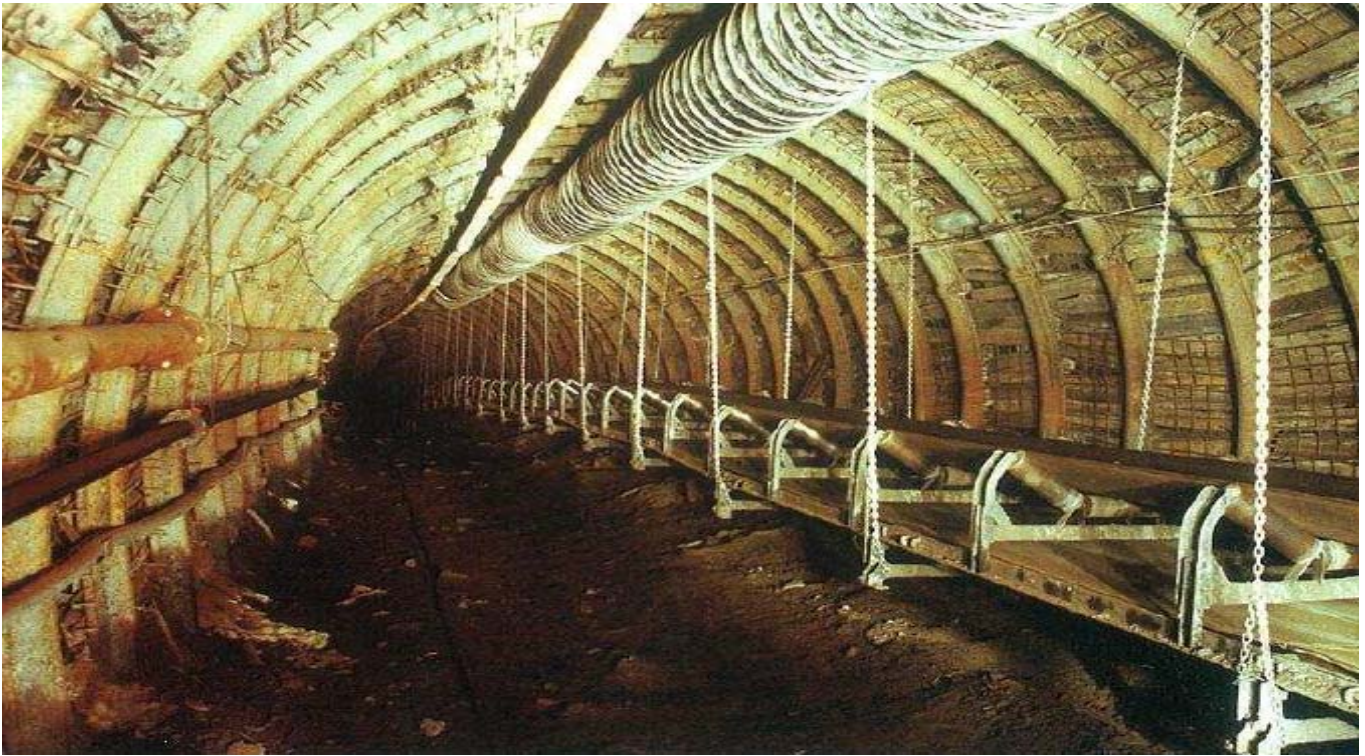
### Previous key data

1. Kind or mateial nature to transport
2. Production desired
3. Granulation
4. Mateial humidity and abrasiveness
5. Localization and site
6. Betl conveyor angle if required
7. Material density



## SITE

### INTERIOR



Coal Mining – Metal Mining – Heap – Process Plant

### EXTERIOR



Mining-Loading docks-Strip mining-Treatment Industrial-Thermal Power Station-Heap



## COMBINABLE DISPOSITION

### HANGING



Using for saving space in interiors, also for floor conditions and cleanliness.

### HORIZONTAL





# COMBINABLE DISPOSITION

## VERTICAL



## SLOPE



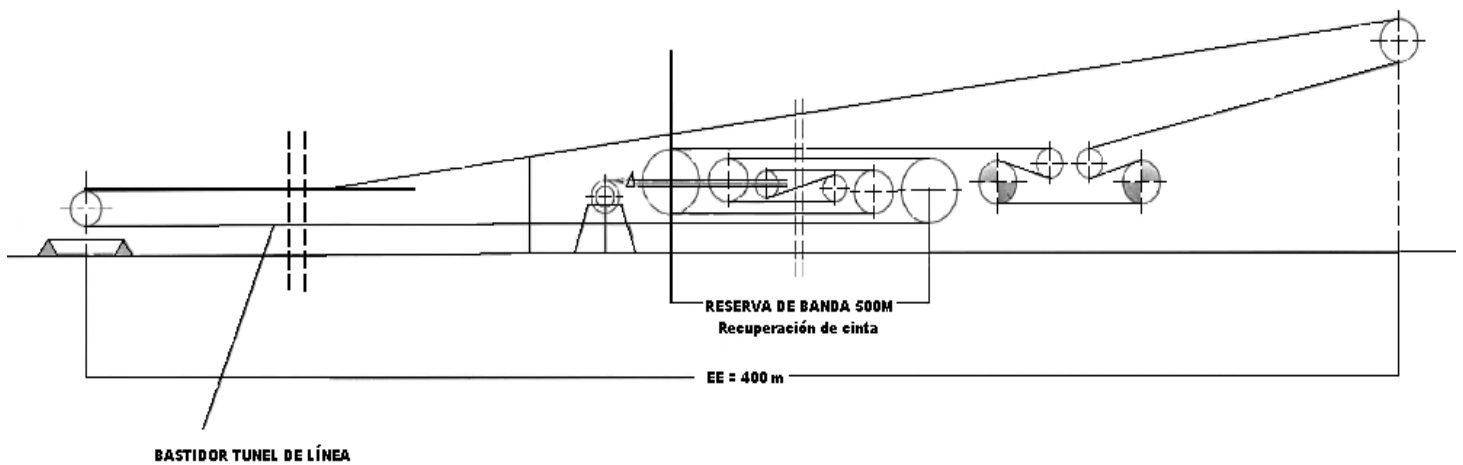


# COMBINABLE DISPOSITION

## TELESCOPIC



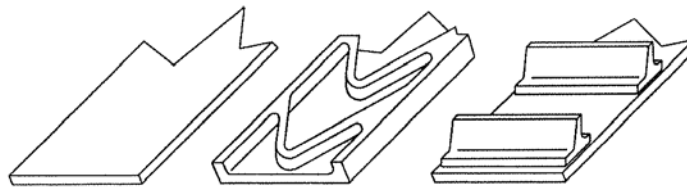
## BOOSTER





# COMPONENTS

## BELTS



INCLINACIÓN MÁXIMA DE TRANSPORTE									
Características básicas del material transportado	PEGAJOSIDAD O PLASTICIDAD								
	BAJA			MEDIA			ALTA		
	TAMAÑO MATERIAL TRANSPORTADO								
	R	T	P	R	T	P	R	T	P
INCLINACIÓN	8	12	15	12	15	18	18	20	22

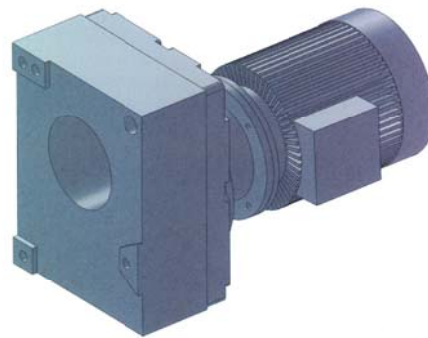
R	Material de forma redondeada
T	Material en trozos irregulares (heterogéneos)
P	Material en forma de polvo

ANCHO MÍNIMO DE BANDA		
Ancho banda	Tamaño del material	
	Homogéneo	Heterogéneo
300	50	75
400 (*)	70	100
500 (*)	90	150
600 (**)	110	200
650 (*)	130	200
700	130	250
800 (*)	150	300
900	170	350
1000 (*)	200	400
1100	230	450
1200 (*)	260	500
1300	300	550
1400 (*)	350	600
Otras		

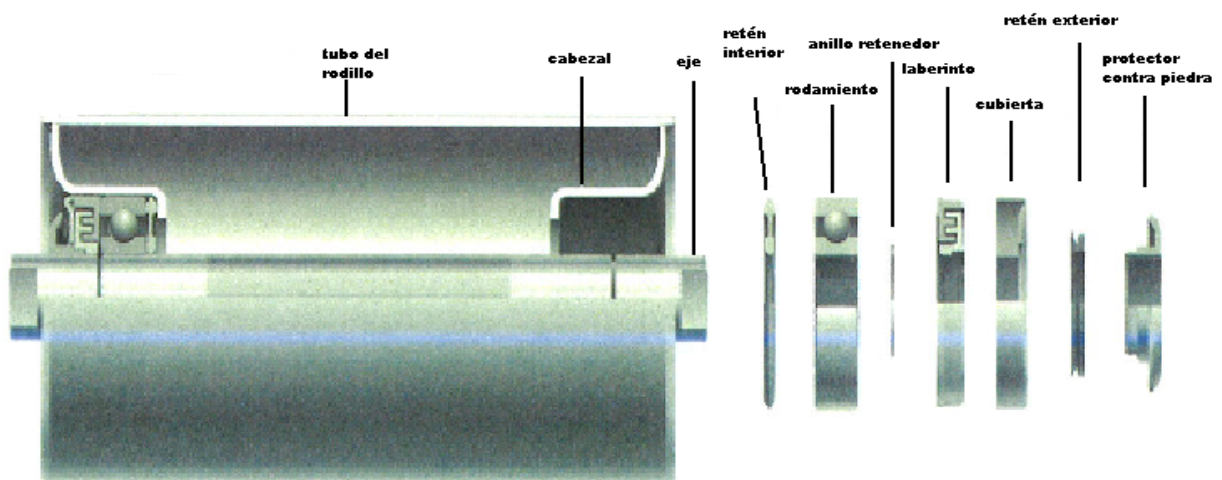


# COMPONENTS

## GEAR MOTOR



## ROLLERS AND COMPONENTS



## COMPONENTS

### BELT COVER



### DRUM MOTORS





## COMPONENTS

### BELT CLEANER



### PULLEYS AND SELF CENTRED SUPPORT



## REFERENCES

### BURKINA FASO



### SAN PEDRO DE SULA (HONDURAS)





## REFERENCES

### GUINEA BISAU



### PUERTO DE VALENCIA (SPAIN)



## REFERENCES

### ARGELIA



### COSTA RICA





## REFERENCES

### LUGO (SPAIN)



### VALENCIA DE DON JUAN (SPAIN)



# MACHINERY

MACHINERY	BRAND	MAX. RANGE
Boring Machine	SCHARMANN COLUMNA MOVIL con control Fagor 8055 M/T 125 CNC	14 m Travelled in X 3 m Travelled in Z 1.5 Travelled in Y Rotary table 2 m. desplazable en X
	JUARISTI MDR-125 CNC con control Fagor 8055 M/T	Cross travel 2.5 m Longitudinal travel 3m Axial travel 3 m
	JUARISTI MDR-125	Cross travel 2 m Longitudinal travel 2 m Axial travel 2 m
Lathe	GURUTZPE B1400/CNC Con control Fagor 8055 T/C	Distance between points 6 m High 0.95 m Admissible diameter under cross travel 1.25 m Admissible diameter over bench 1.6 m
	GURUTZPE AUTO- M con control Fagor 8055 T/C	Distance between points 3 m High 0.4 m Admissible diameter under cross travel 0.55 m Admissible diameter over bench 0.8 m
Milling Machine	ANAYAK VH 220-CNC con control Heidenhain TNC 410 CA	Table useful surface 2.2 x 0.7 m Longitudinal travel 2 m Transversal travel 800 mm Vertical travel 910 mm
	ANAYAK CNC 1080	800 mm Travelled in X 400 mm Travelled in Y 200 mm Travelled in Z
	Lagun GUM-152	Table useful surface 2.2 x 0.7 m Rotation Table in both directions +/- 45° Automatic longitudinal travel 1050 mm Automatic cross travel 330 mm Automatic vertical 475 mm
Turning Center	MORI SEIKI SL-303 BMC/1500	Diameter 420 mm Lengh 1580 mm Paso de barra útil 89 mm Cross travel 250 mm Longitudinal travel 1640 mm
	MORI SEIKI DL.20	Two synchronized headerso with diameter 320 mm 2 torretas de 12 tools Synchronization of headers Piece scoop Lengh 400 mm Load bars SAMSYS
Bending Machine	CASANOVA	Roller width 2500 mm Plate thickness 35 mm
		Roller width 2500 mm Plate thickness 10 mm
		Roller width 3000 mm Plate thickness 35 mm
		Roller width 2500 mm Plate thickness 80 mm
Hobbing Machine	G.S.P. PRECIMO	Module 6 Dameter 600 mm Travelled 200 mm
	Néstor	Module 4 Turning cut 250 mm
Thread Forming Machine	RHRM 45 D	Module 4.5
shaping Machine	URPE MN-300/G	300 m of travelled Automatic removal during setback
Plasma Cutting Machine	TECOI HPR 260	Table 2000 x 8000 mm Plate thickness 60 mm
Saw Machine	SABI PBA 360 CNC	1500 x 1000 mm cut Double column belt inclined Feed trolley
Guillotine Machine	CIZALLA HIDRAÚLICA LOIRE SAFE	Width 7000 mm Plate thickness 15 mm
		Width 3000 mm Plate thickness 25 mm
		Width 3000 mm Plate thickness 20 mm
Bridge Crane	SATI	2 Units de 25 Tn
		2 Units de 12,5 Tn
		4 Units monorail de 2 Tn



# MACHINERY

## SOME EXAMPLES OF OUR MACHINES



Boring Machine



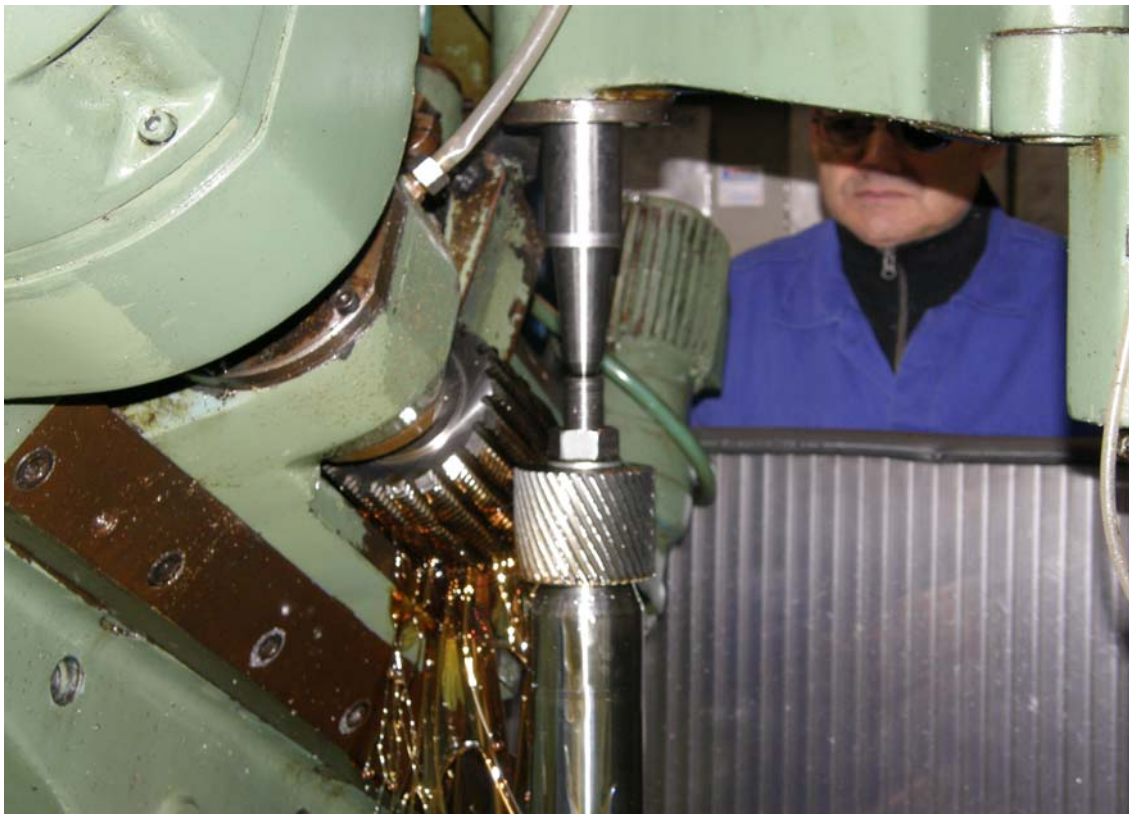
Lathe



## MACHINERY



Bending Machine



Hobbing Machine



## MACHINERY



Milling Machine



Turning Center

# TOMA DE DATOS

Fecha

**CLIENTE:**

Dirección

Persona de contacto

Cargo

E-mail

Teléfono/Móvil

**SOLICITUD DE:**

- Ingeniería
- Fabricación
- Mantenimiento

**EMPLAZAMIENTO:**

- Interior
- Exterior

**REPUESTOS:**

- Banda
- Rascadores
- Reductoras
- Rodillos
- Tambores
- Estaciones

**DISPOSICIÓN COMBINABLE:**

- Colgante
- Horizontal
- Vertical
- Pendiente
- Telescópica
- Booster

**DATOS PARA LA INSTALACIÓN:**

Localización

Producción

Granulometría

Material

Densidad

Abrasividad

**OBSERVACIONES:**





#### **Dirección comercial**

Ctra. de Villarroaño, 140 (Km. 3).

24199 Santa Olaja de la Ribera, LEÓN, España

**Teléfono +34 987 242 111** • Fax +34 987 247 351

#### **Dirección fiscal**

Polígono Industrial Almazcara, Nave 2

24398 Almazcara, PONFERRADA, España

**Teléfono +34 987 457 564** • Fax +34 987 457 573

#### **Delegación Colombia**

Edificio Nueva Granada CALLE 72. 13-23. Piso 9.

BOGOTÁ, Colombia

**Teléfono 57 (1) 540 17 00** • Fax 57 (1) 540 17 00

---

[info@emico.es](mailto:info@emico.es)